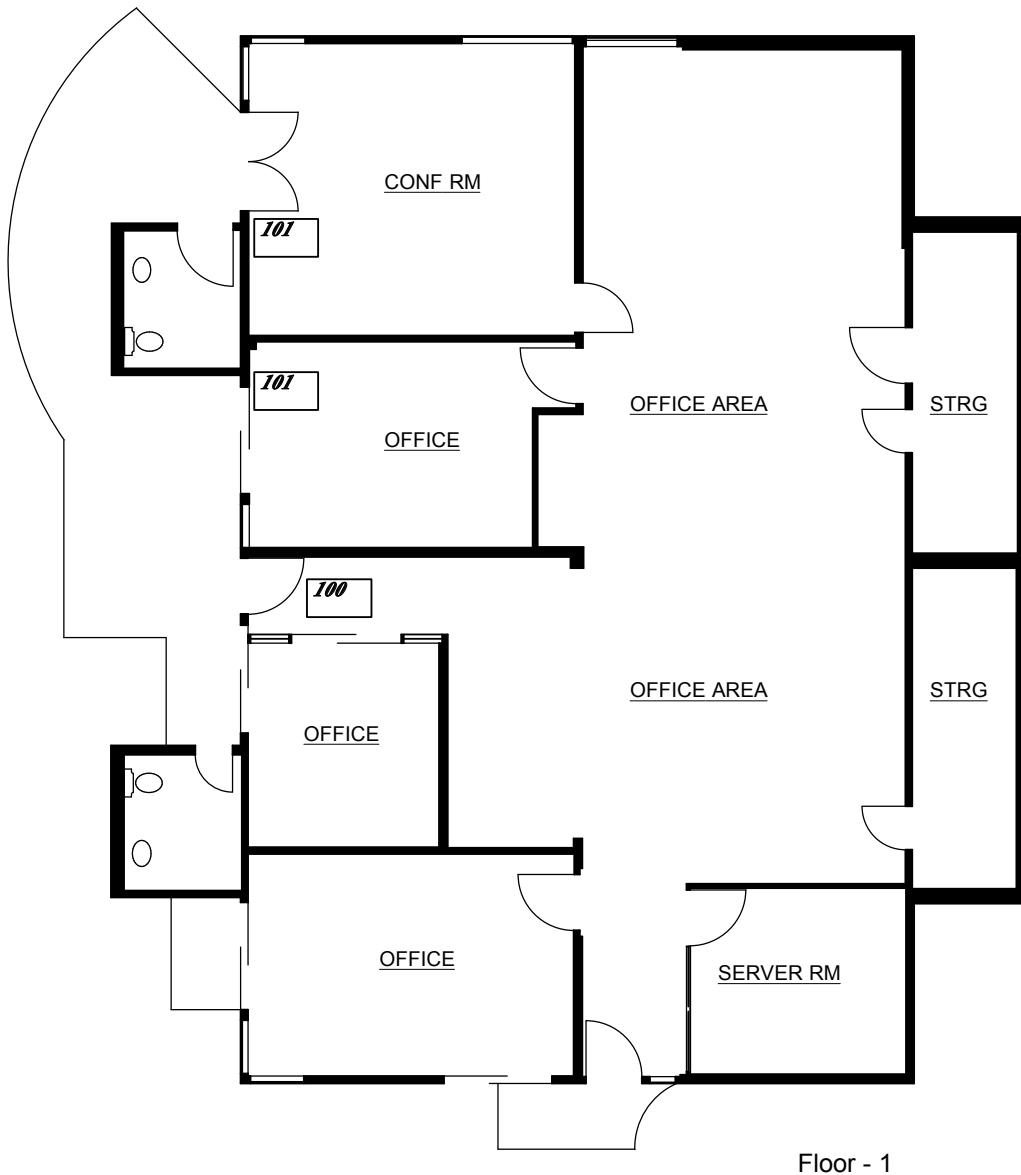


AVAILABLE SPACE		
Building 3738	Suite 100/101	±2,420 RSF



Plans not to scale

LEASING INFORMATION

**Ed Del Beccaro**  
Managing Director  
925.357.2019  
ed.delbeccaro@transwestern.com  
lic 00642167

**Matt Hurd**  
Vice President  
925.357.2013  
matt.hurd@transwestern.com  
lic 01347571

**Matt Hatfield**  
Associate  
925.357.2028  
matt.hatfield@transwestern.com  
lic 01937755



500 Ygnacio Valley Road, Ste. 100  
Walnut Creek, CA 94596  
CA BROKERAGE LIC 01263636  
T 925.357.2000 F 925.357.2001  
www.transwestern.com/walnutcreek